

FC-BRD-01 Series Blast Doors

FC-BRD-01-SL Single-leaf blast doors FC-BRD-01-DL Double-leaf blast doors

*Enhanced by New Generation Hardware
Better user experience & More durability*



**IP65 Rated Dust&Water Proof
Heavy-duty Bearing Hinges**



**Self-lubricating
Heavy-duty Panic Bar**



**Two-point
Heavy-duty Latches**



FC-BRD-01 series blast doors are designed to block the blast waves through the passage ways into the protected buildings. Its steel structure assures the reliable protection against blast impacts under tough conditions such as high temperature or fire.

FC-BRD-01 series blast doors could serve wide range of applications, including civil defense, OGP, new energy and other applications where blast-resistant protection is required.



- Enhanced body designed for heavy load.
- Water and dust proof bearing kit rated by Ip65.
- High tensile bolts sealed for the best durability.
- Long-life bearing grease enables long-term maintenance free.



- Enhanced body designed for toughest operation under emergency.
- Low operation resistance and maintenance-free thanks to utilization of self-lubricating material.
- Oval-shaped push bar offering better user experience.



- Enhanced body designed for heavy load.
- High tensile bolts seals for the best durability.
- Adjustable for easy installation.

[Product features]

- **Strong blast resistance**
Being able to stand blast impacts with peak pressure up to 7 bar for long duration.
- **Excellent durability**
Equipped with unique heavy-duty hardware including IP65 rated dust&water proof bearing hinges, panic bars and latches. Maintenance-free for 10 years.
- **Assured water and air tightness**
The seal of door frame ensures the good performance of tightness.
- **Long duration fire resistance**
3-hour fire rating for the toughest scenarios.
- **Different colors for options**
Door's color can be customized upon requests.

[Order Number]

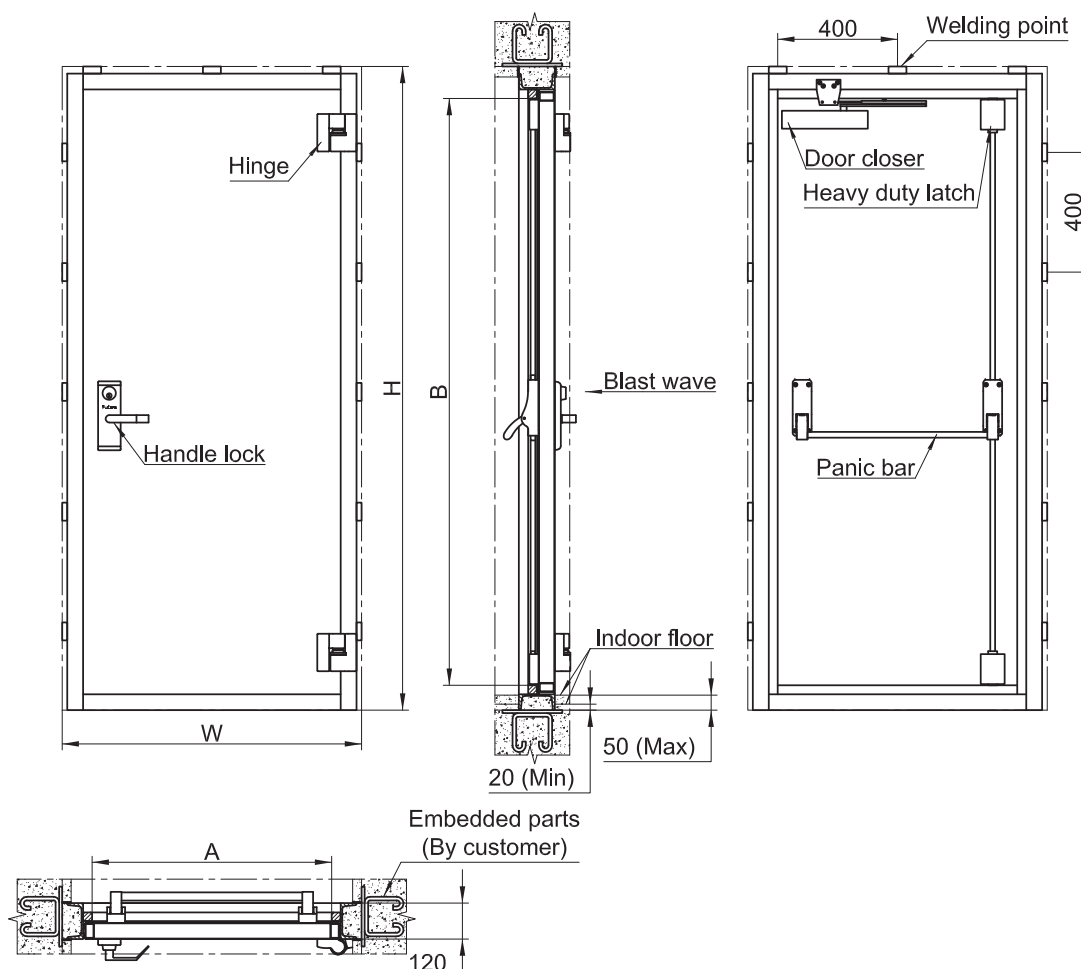
ATO PN: FCBRD01-[A]-[B]-[C]

A	B	C
Model	Width (mm)	Height (mm)
SL –Single DL –Double	W(opening width)	H(opening height)

For other size please contact FUCARE.

[Installation type and sizes]

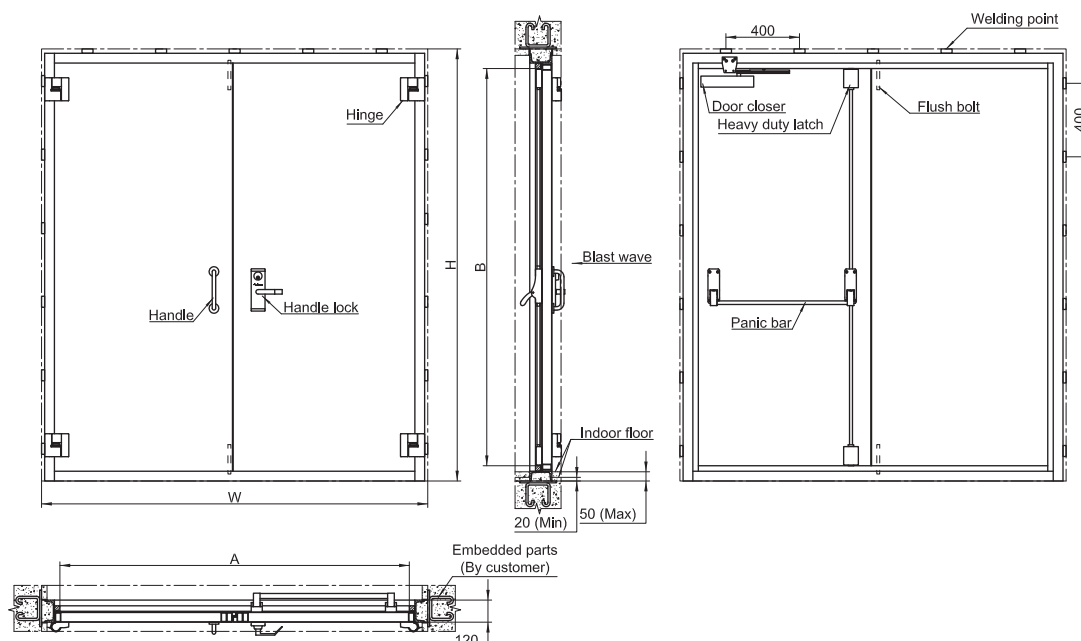
i . Installation sizes of single leaf doors (FC-BRD-01-SL)



Model	Opening sizes		A (mm)	B (mm)	Net Weight (kg)
	W(mm)	H(mm)			
FC-BRD-01-SL-800X1800	800	1,800	600	1,610	240
FC-BRD-01-SL-800X2000	800	2,000	600	1,810	260
FC-BRD-01-SL-800X2100	800	2,100	600	1,910	270
FC-BRD-01-SL-1000X1800	1,000	1,800	800	1,610	270
FC-BRD-01-SL-1000X2000	1,000	2,000	800	1,810	300
FC-BRD-01-SL-1000X2100	1,000	2,100	800	1,910	310
FC-BRD-01-SL-1000X2400	1,000	2,400	800	2,210	340
FC-BRD-01-SL-1200X2000	1,200	2,000	1,000	1,810	330
FC-BRD-01-SL-1200X2100	1,200	2,100	1,000	1,910	350
FC-BRD-01-SL-1200X2400	1,200	2,400	1,000	2,210	390
FC-BRD-01-SL-1400X2000	1,400	2,000	1,200	1,810	370
FC-BRD-01-SL-1400X2100	1,400	2,100	1,200	1,910	390
FC-BRD-01-SL-1400X2400	1,400	2,400	1,200	2,210	430

For other size please contact FUCARE.

ii . Installation sizes of double leaf doors (FC-BRD-01-DL)



Model	Opening sizes		A (mm)	B (mm)	Net Weight (kg)
	W(mm)	H(mm)			
FC-BRD-01-DL-1500X2000	1,500	2,000	1,300	1,810	390
FC-BRD-01-DL-1500X2100	1,500	2,100	1,300	1,910	410
FC-BRD-01-DL-1500X2400	1,500	2,400	1,300	2,210	450
FC-BRD-01-DL-1800X2000	1,800	2,000	1,600	1,810	450
FC-BRD-01-DL-1800X2100	1,800	2,100	1,600	1,910	470
FC-BRD-01-DL-1800X2400	1,800	2,400	1,600	2,210	520
FC-BRD-01-DL-2100X2100	2,100	2,100	1,900	1,910	520
FC-BRD-01-DL-2100X2400	2,100	2,400	1,900	2,210	580
FC-BRD-01-DL-2100X2700	2,100	2,700	1,900	2,510	640
FC-BRD-01-DL-2100X3000	2,100	3,000	1,900	2,810	700
FC-BRD-01-DL-2400X2100	2,400	2,100	2,200	1,910	580
FC-BRD-01-DL-2400X2400	2,400	2,400	2,200	2,210	650
FC-BRD-01-DL-2400X2700	2,400	2,700	2,200	2,510	710
FC-BRD-01-DL-2400X3000	2,400	3,000	2,200	2,810	780

For other size please contact FUCARE.

[Product specifications]

Material	Door frame and leaf: PU Coated steel Hardware: SS304(Lock/Hinges/Latches)
Designed protection grade	Up to 7 bar for long duration
Fire resistance	>3 hours

[3rd party Test/Certifications]

Blast test conducted according to standard ASTM F2927(12) by Intertek.
Fire test conducted according to NFPA 252(2017), CAN/ULC S104(2015),
UL 10C(2016), UL 10B(2015) by Intertek. Test report is available upon request.

intertek

IP65 Rating to heavy-duty hinges according to IEC60529:1989/
AMD2:2013/COR1:2019 by SGS. Test report is available upon request.

SGS

Product is CE marked

CE

FuCare

FUCARE PROTECTION PTE. LTD.

21 Woodlands Close #05-06 Primz Bizhub,
Singapore 737854
Tel: +65 6260 9888
E-mail: info@fucare.com
www.fucare.com

