

FC-BRS-01 Blast Resistant Wall Sleeves

FC-BRS-01-ND Round type
FC-BRS-01-S Square type

**Be able to stand
multiple blast hits**

**Maintain all functions
after blast hits**



**Various opening sizes
are available**



Corrosion resistant

**Customization upon
request**

FC-BRS-01 series wall sleeves allows penetration of blast resistant walls with blast protection and air tightness ensured. The wall sleeve is designed to be casted in concrete wall or connected to ducts.

With its simple but efficient structure, FC-BRS-01 series wall sleeves can fit most of the applications regarding various opening sizes and blast protection grade requested.

[Features & Benefits]

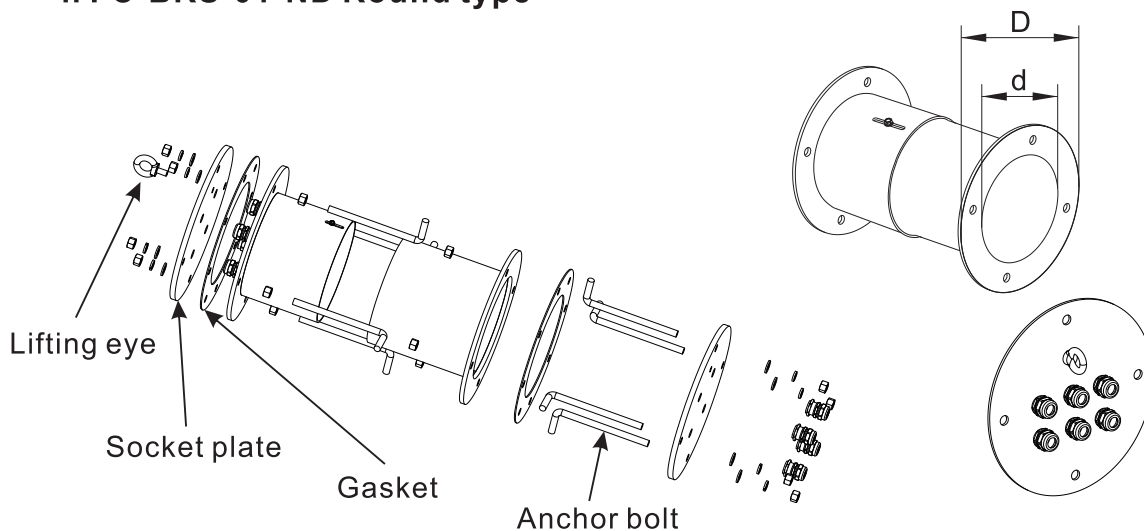
- **Be able to stand multiple blast hits**
Able to stand multiple blast impacts and maintain tightness after blasts.
- **Various opening sizes are available**
Multiple standard opening sizes are available. Customized opening size is also available upon request.
- **Good corrosion resistant performance**
Made of chemical-resistant materials such as HGS, or stainless steel.

[Blast protection]

Blast protection grade of product ranges from 2 bar to 20 bar. Product is type tested at Intertek.

[PN and Product Dimension]

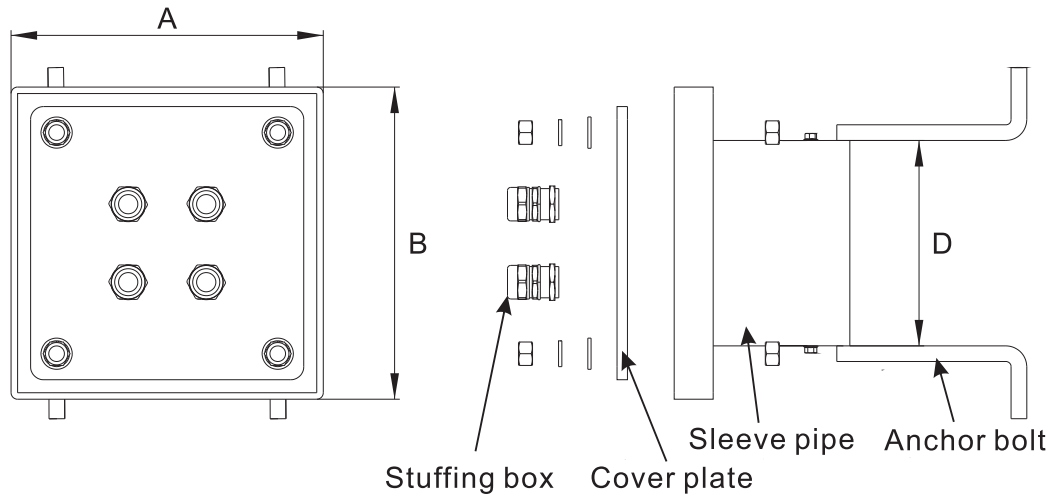
i. FC-BRS-01-ND Round type



PN	ΦD (mm)	Φd (mm)	Thread Type x Qty
FC-BRS-01-ND100	200	100	M12x4
FC-BRS-01-ND150	250	149	M12x4
FC-BRS-01-ND200	300	203	M12x4
FC-BRS-01-ND250	350	247	M12x8
FC-BRS-01-ND300	400	300	M12x8
FC-BRS-01-ND350	450	350	M12x8

Note: FuCare offers customization service upon request.

ii. FC-BRS-01-S Square type

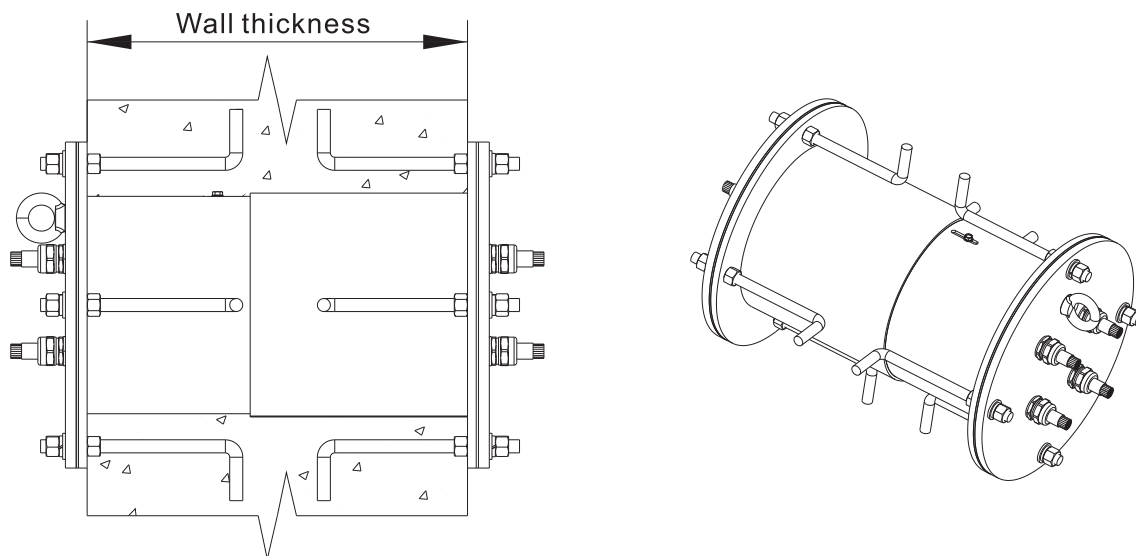


PN	ΦD (mm)	A (mm)	B (mm)	Thread Type x Qty
FC-BRS-01-S100	100	200	200	M12x4
FC-BRS-01-S150	149	250	250	M12x4
FC-BRS-01-S200	203	300	300	M12x4
FC-BRS-01-S250	247	350	350	M12x8
FC-BRS-01-S300	300	400	400	M12x8
FC-BRS-01-S350	350	450	450	M12x8

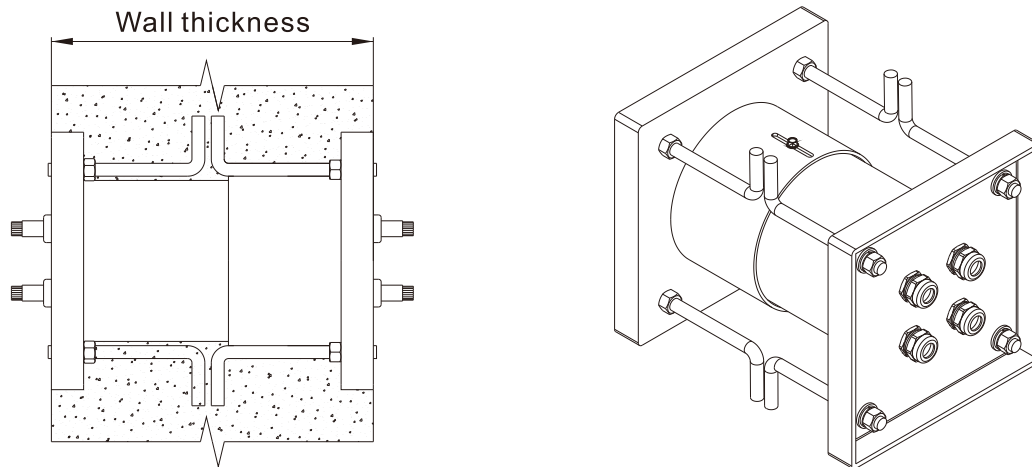
Note: FuCare offers customization service upon request.

[Typical Installations]

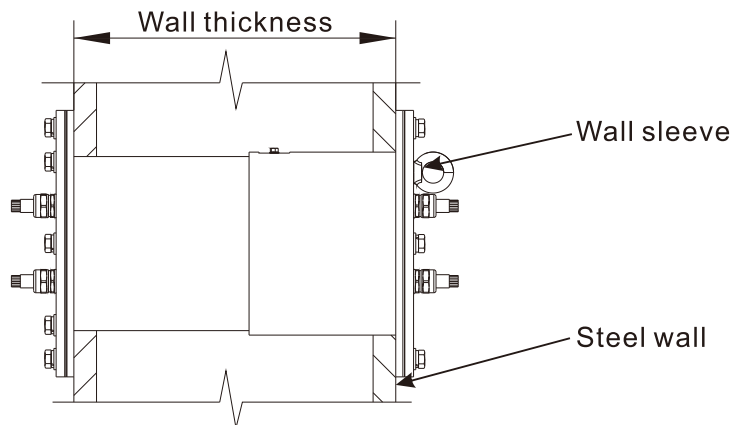
i. FC-BRS-01-ND Round type – Casted in concrete wall



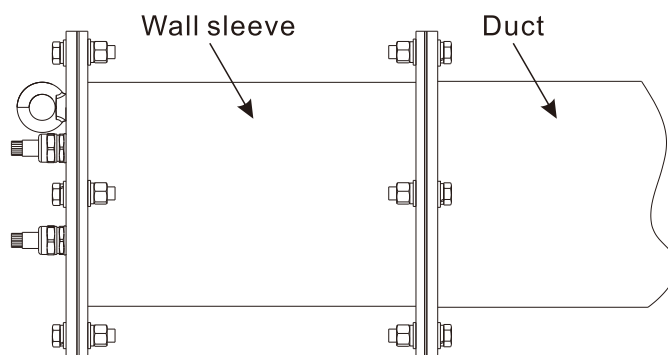
ii. FC-BRS-01-S Square type – Casted in concrete wall



iii. FC-BRS-01-ND Round type - Steel wall mounted



iv. FC-BRS-01-ND Round Type - Duct connected



FuCare

FUCARE PROTECTION PTE. LTD.

21 Woodlands Close #05-06 Primz Bizhub,
Singapore 737854
Tel: +65 6260 9888
E-mail: info@fucare.com
www.fucare.com

